

**CANADIAN DIESEL'S  
EST 1989**



**engines@marlowemarine.com**



**EMD  
ELECTRO-MOTIVE-DIESEL**

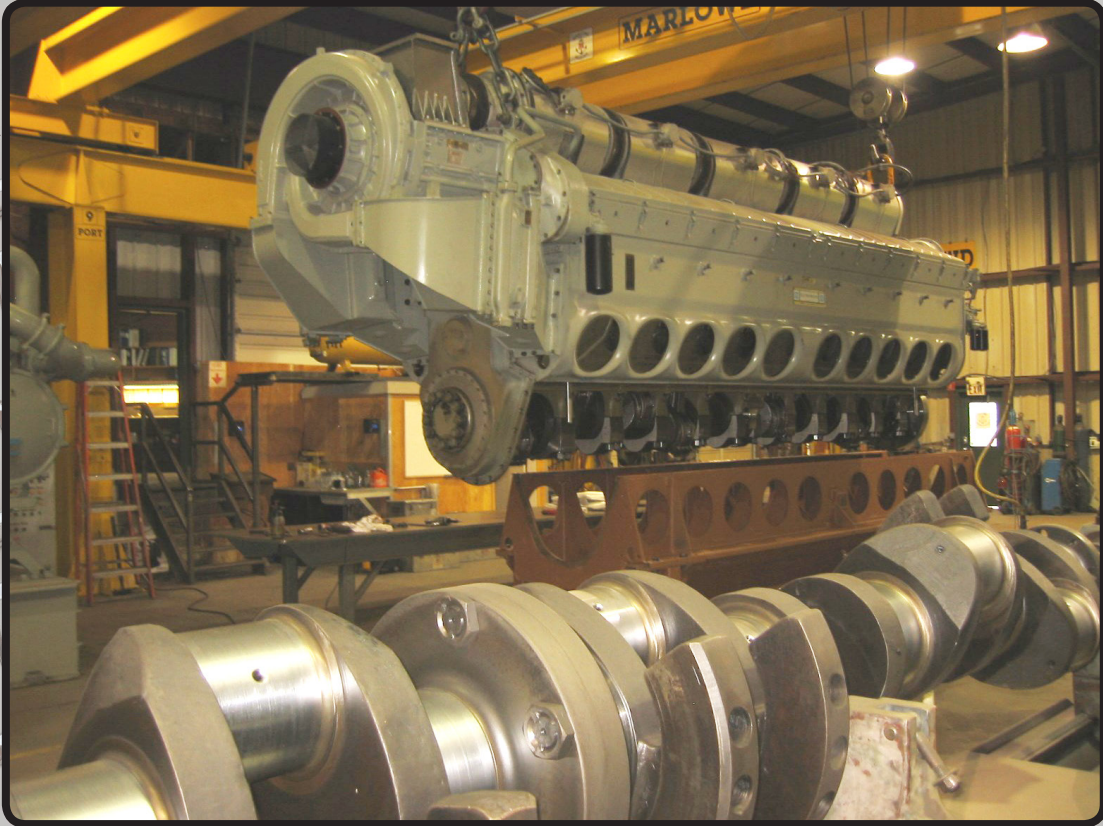


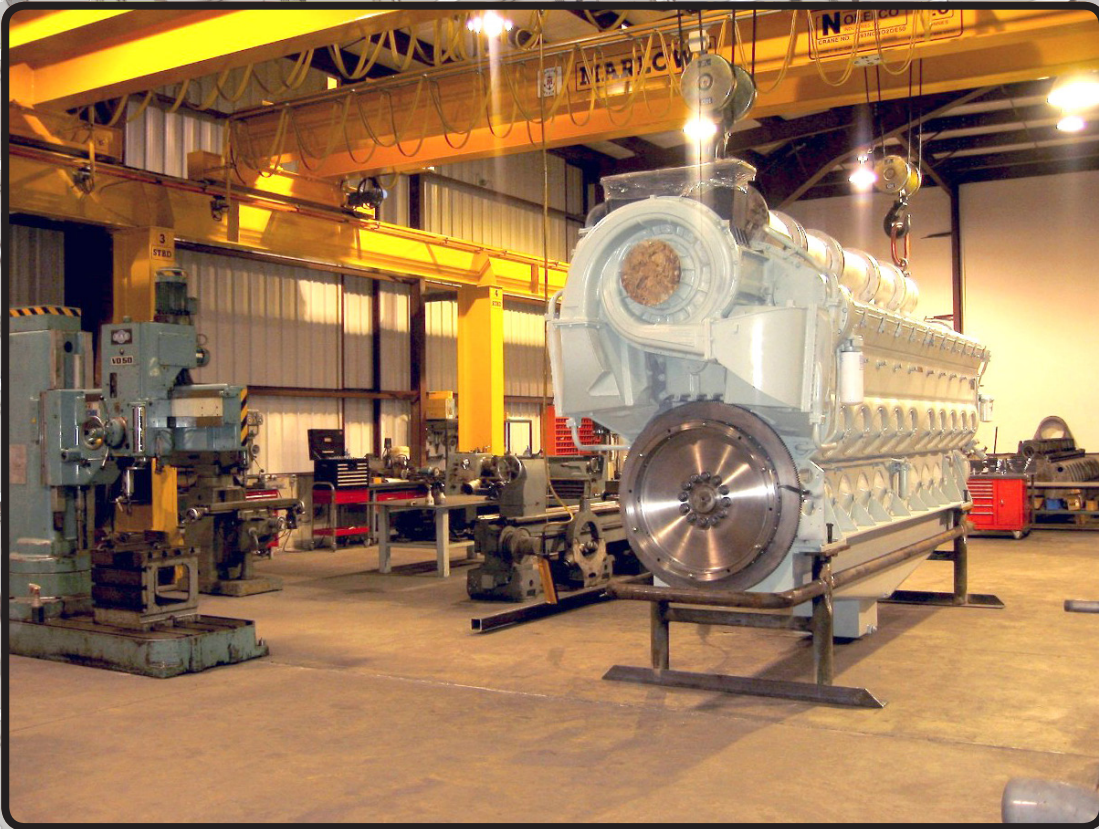
**MARLOWE MARINE**

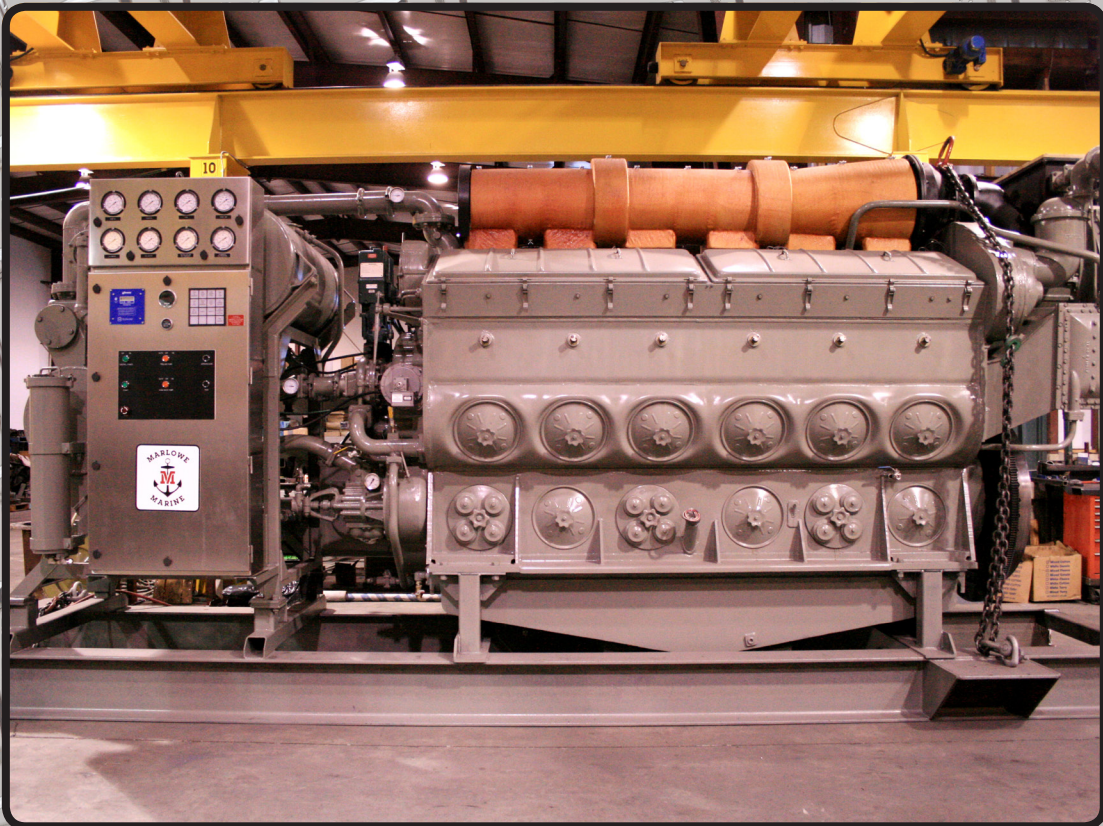
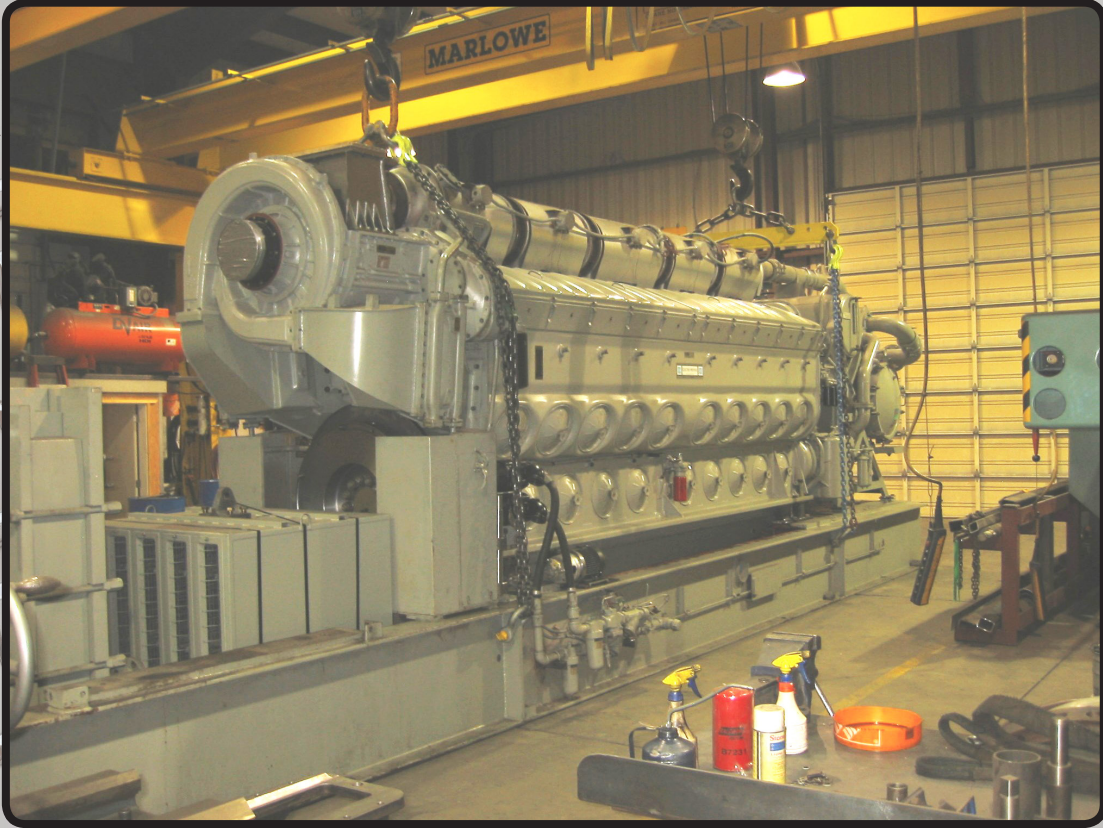
**3744 3RD AVENUE  
PORT ALBERNI,  
BRITISH COLUMBIA, CANADA, V9Y 4G1  
PHONE: (250)724-2302 FAX:(250)724-2303  
WEB: www.marlowemarine.com**











**EMD**

**ENGINE REPOWER PACKAGES**

**EMD REBUILT ENGINE**

**ACCESSORY RACK**

**CONTROL CABINET**

---

**EMD 8-645 ROOTS 1000 BHP @ 900 RPM**

**EMD 8-645 TURBO 1525 BHP @ 900 RPM**

**EMD 12-645 ROOTS 1500 BHP @ 900 RPM**

**EMD 12-645 TURBO 2305 BHP @ 900 RPM**

**EMD 16-645 ROOTS 1950 BHP @ 900 RPM**

**EMD 16-645 TURBO 3070 BHP @ 900 RPM**

**EMD 20-645 TURBO 3600 BHP @ 900**

---

**EMD 20-710 G7C 5000 BHP @ 900 RPM**



**CANADIAN**

	<b>ELECTRO-MOTIVE</b> LaGrange, Illinois U.S.A.	
<b>MODEL</b> L20-710 G7C		<b>SERIAL</b> 2007



**EMD ENGINES**